

**PROPOSED**

MAP LU-4

LEGEND

**FUTURE LAND USE MAP**

- RESORT FACILITIES MEDIUM
- RESIDENTIAL/OFFICE/RETAIL
- PRESERVATION
- RECREATION/OPEN SPACE
- INSTITUTIONAL
- TRANSPORTATION/UTILITY

**COASTAL STORM AREA**

- COASTAL STORM AREA LINE

**FUTURE TRANSPORTATION**


- 2 LANE MAJOR ARTERIAL
- 4 LANE MAJOR ARTERIAL

SOURCE: TOWN OF INDIAN SHORES

**NORTH HALF  
TOWN OF INDIAN SHORES  
PINELLAS COUNTY, FLORIDA**

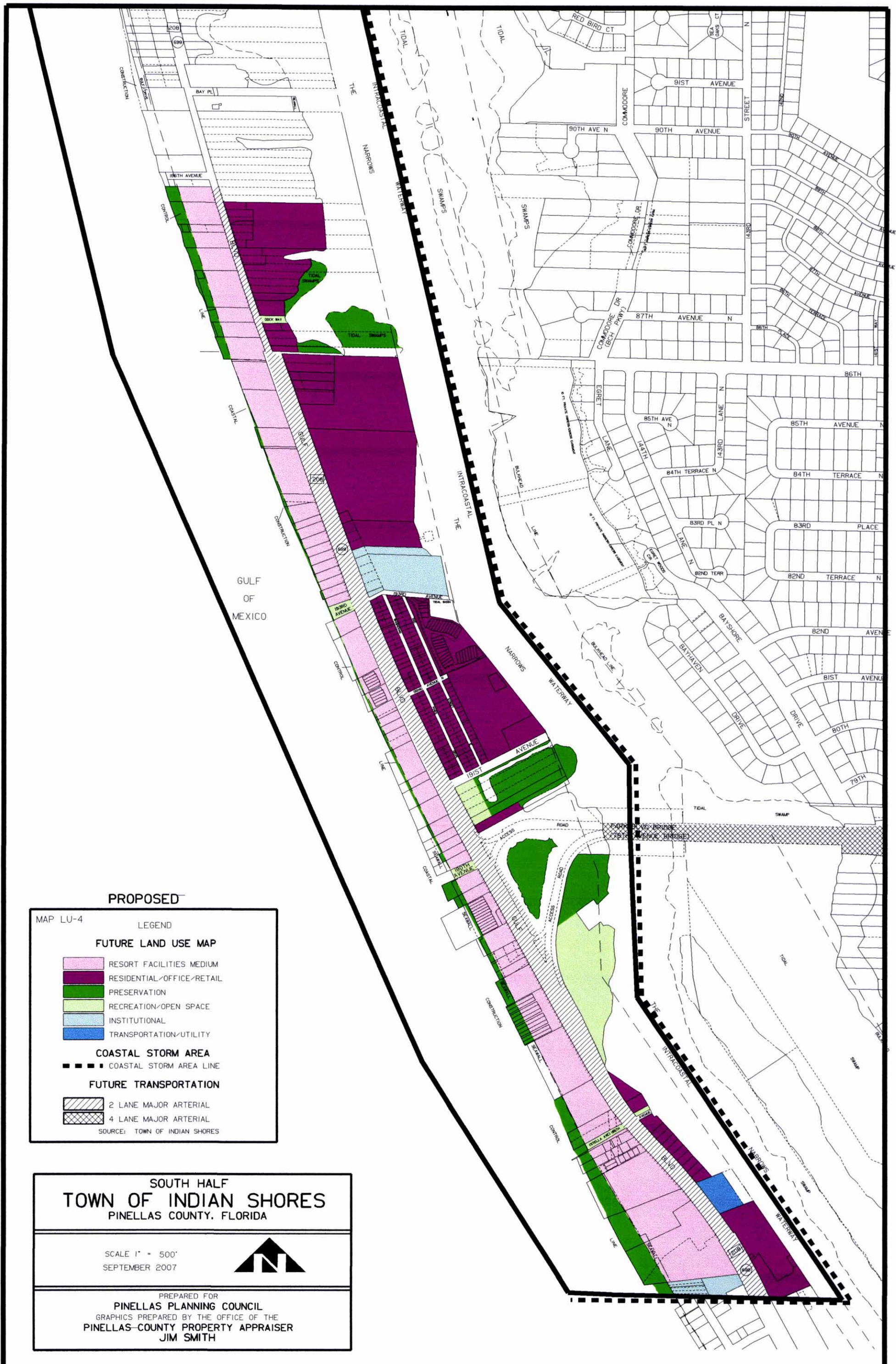
---

SCALE 1" = 500'  
SEPTEMBER 2007



---

PREPARED FOR  
**PINELLAS PLANNING COUNCIL**  
GRAPHICS PREPARED BY THE OFFICE OF THE  
**PINELLAS COUNTY PROPERTY APPRAISER  
JIM SMITH**



**PROPOSED**

MAP LU-4

LEGEND

**FUTURE LAND USE MAP**

- RESORT FACILITIES MEDIUM
- RESIDENTIAL/OFFICE/RETAIL
- PRESERVATION
- RECREATION/OPEN SPACE
- INSTITUTIONAL
- TRANSPORTATION/UTILITY

**COASTAL STORM AREA**

- COASTAL STORM AREA LINE

**FUTURE TRANSPORTATION**


- 2 LANE MAJOR ARTERIAL
- 4 LANE MAJOR ARTERIAL

SOURCE: TOWN OF INDIAN SHORES

**SOUTH HALF  
TOWN OF INDIAN SHORES**  
PINELLAS COUNTY, FLORIDA

---

SCALE 1" = 500'  
SEPTEMBER 2007



---

PREPARED FOR  
**PINELLAS PLANNING COUNCIL**  
GRAPHICS PREPARED BY THE OFFICE OF THE  
**PINELLAS COUNTY PROPERTY APPRAISER**  
JIM SMITH