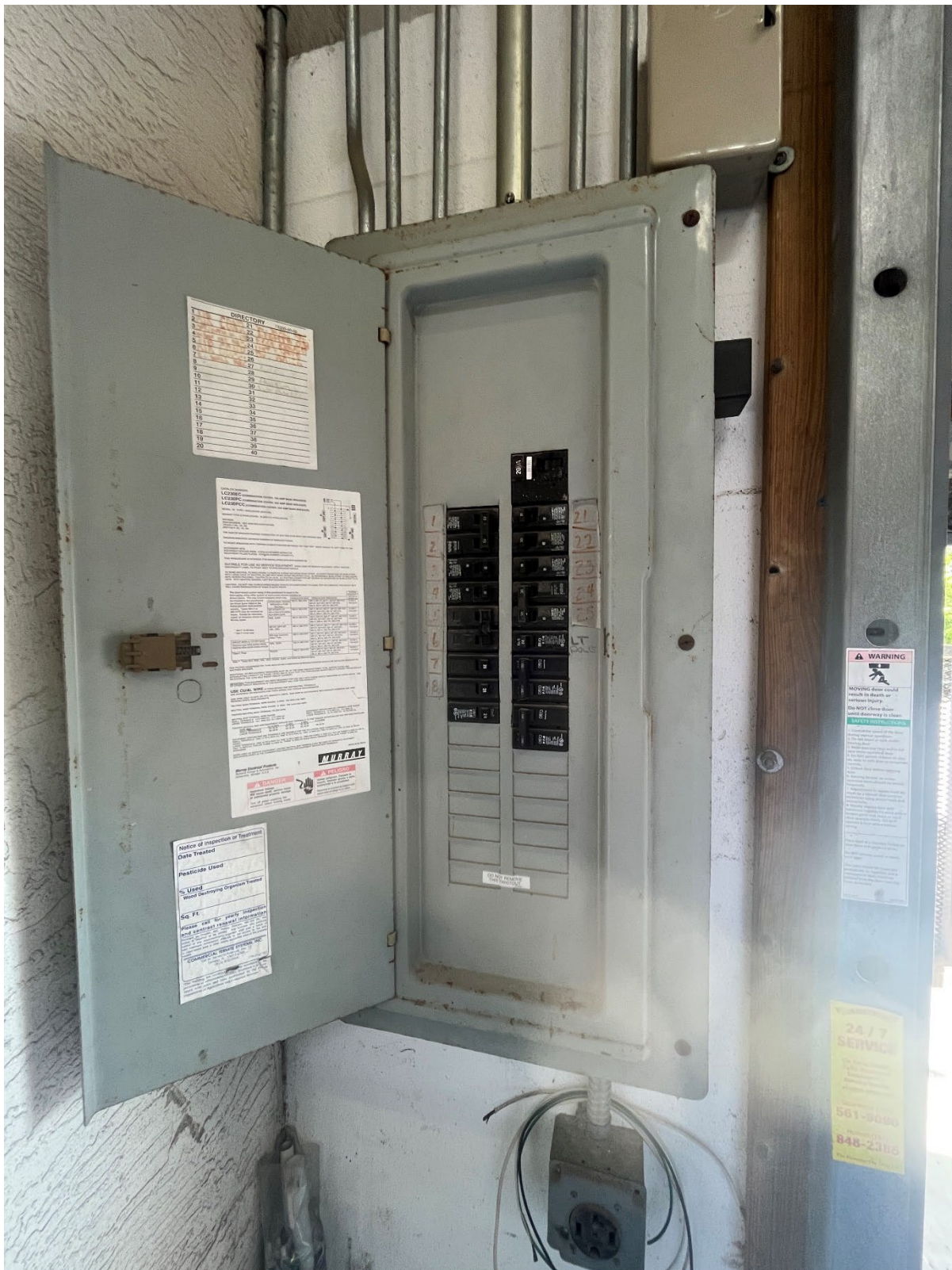


Electrical Panel



Panel Make

LC230EC (COMBINATION COVER; 150 AMP MAIN BREAKER)
LC230PC (COMBINATION COVER; 200 AMP MAIN BREAKER)
LC230PCC (COMBINATION COVER; 200 AMP MAIN BREAKER)

MURRAY TYPE 3 PANELBOARD, CLASS CTL PANELBOARD

RATINGS:
200A MAXIMUM - SEE MAIN BREAKER RATING
120/240 V AC, 1Ø, 3W
208Y/120 V AC, 1Ø, 3W

THE SUM OF BREAKER RATINGS CONNECTED TO ANY ONE STAB MUST NOT EXCEED 200A

DIAGRAM INDICATES MAXIMUM NUMBER OF BREAKER POLES

TO RESET BREAKERS WITH TRIPPED HANDLE POSITION BETWEEN "ON" AND "OFF" MOVE HANDLE TO "OFF" THEN TO "ON"

ACCESSORY KITS:
EQUIPMENT GROUND BARS - CATALOG NUMBER SERIES "LX"
DEADFRONT FILLER PLATES - CATALOG NUMBER LX100FP (1")

THIS PANELBOARD IS INTENDED FOR INSTALLATION INTO BOX NUMBER 33

SUITABLE FOR USE AS SERVICE EQUIPMENT. WHEN USED AS SERVICE EQUIPMENT, APPLY "SERVICE DISCONNECT" LABEL TO FRONT NEXT TO MAIN BREAKER HANDLE.

TO BOND NEUTRAL TO ENCLOSURE: (1) REMOVE SCREW SECURING BOND STRAP. (2) INSERT ROUND END OF BOND STRAP INTO LARGE HOLE OF NEUTRAL IN LINE WITH BOND STRAP MOUNTING HOLE. (3) REASSEMBLE BOND STRAP TO ENCLOSURE WITH SCREW PROVIDED, TIGHTEN TO 25 LB-IN. (4) TIGHTEN CONNECTOR SET SCREW ON ROUND END OF BOND STRAP TO 45 LB-IN. WITH NEUTRAL BONDED, LEFT BAR BECOMES SPLIT NEUTRAL.

CAUTION: DO NOT USE HYDROCARBON BASED SPRAYS OR COMPOUNDS TO CLEAN, DRY OR LUBRICATE THIS DEVICE AS IT WILL CAUSE DEGRADATION OF SOME PLASTIC PARTS

The short-circuit current rating of this panelboard is equal to the interrupting rating of the system of overcurrent devices installed as

[illegible]

Note 1: Types BLH, BOH, HBL, HBO, HQJH2, QJ2H, and QJH2 are Siemens types

FOR PROPER DEADFRONT FIT, TYPE MD-A OR MD-H BREAKERS IN BRANCH POSITION SHOULD BE INSTALLED ADJACENT TO ANOTHER BREAKER

ADDITIONAL OR REPLACEMENT BREAKERS MUST BE OF THE SAME MANUFACTURER, TYPE, AMPERE RATING AND INTERRUPTING CAPACITY AS THOSE LISTED ABOVE SUCH THAT THE PANELBOARD SHORT CIRCUIT CURRENT RATING EQUALS OR EXCEEDS THE AVAILABLE SHORT CIRCUIT CURRENT.

IMPORTANT: THIS EQUIPMENT HAS BEEN DESIGNED FOR USE ONLY WITH THOSE CIRCUIT BREAKERS AS LISTED ABOVE. USE OF OTHER CIRCUIT BREAKERS IN THIS EQUIPMENT WILL VOID THE WARRANTY.

USE CU/AL WIRE AT PANELBOARD LINE AND NEUTRAL TERMINALS.
SEE MARKINGS ON BREAKERS FOR THEIR WIRING AND TORQUE REQUIREMENTS

SIZE WIRE ONLY TO 60°C OR 75°C AMPACITY LIMITS. SIZE WIRE IN ACCORDANCE WITH BREAKER MARKINGS AND WIRE BENDING SPACE REQUIREMENTS.

NEUTRAL MAIN TERMINAL WIRE RANGE: 6 AWG - 3/0 AWG (150 AMP)

TIGHTEN NEUTRAL MAIN TERMINAL TO 250 LB-IN

NEUTRAL BAR TERMINAL WIRE RANGE:
SMALL TERMINALS: 14-6 AWG CU; 12-6 AWG AL
LARGE TERMINALS: 14-1 AWG CU; 12-1 AWG AL

	14-10 AWG	8 AWG	6 AWG	4-1/2 AWG
TIGHTEN NEUTRAL BAR AND EQUIPMENT GROUND BAR TERMINALS TO THE TORQUE SHOWN BELOW FOR THE WIRE INSTALLED				
WIRE SIZE	14-10 AWG	8 AWG	6 AWG	4-1/2 AWG
SMALL TERMINALS:	25 LB-IN	25 LB-IN	35 LB-IN	45 LB-IN
LARGE TERMINALS:	25 LB-IN	40 LB-IN	45 LB-IN	45 LB-IN

EQUIPMENT GROUND BAR (#2) TERMINALS ARE SUITABLE FOR THE FOLLOWING WIRE COMBINATIONS:
SMALL TERMINALS: ONE 14 TO 6 AWG CU; ONE 12 TO 6 AWG AL; TWO 14 AWG CU; TWO 12 AWG CU; TWO 12 AWG AL SOLID WIRES.
LARGE TERMINALS: ONE 14 TO 2 AWG CU; ONE 12 TO 2 AWG AL; TWO OR THREE 14 AWG CU; TWO OR THREE 12 AWG CU OR AL; TWO 10 AWG CU; TWO OR THREE 10 AWG AL; THREE 10 AWG CU SOLID WHEN TORQUED TO 30 LB-IN; THREE 10 AWG CU

WHEN USED AS SERVICE EQUIPMENT, UNUSED NEUTRAL BAR TERMINALS MAY BE USED TO TERMINATE EQUIPMENT (INCLUDING HUBS) IN THE COMBINATIONS INDICATED FOR EQUIPMENT GROUND BAR TERMINALS.

55045-02-00 REV A

Murray Electrical Products
Siemens Energy & Automation, Inc.
Alpharetta, Georgia U.S.A.

T

MURRAY

▲ DANGER

Hazardous Voltage.
Will cause death, serious injury
or substantial property damage.

Turn off power supplying this equipment before working inside.



⚠ PELIGRO

Voltaje peligroso. Causará la muerte, lesiones graves o daño substancial a la propiedad.

Desconecte el suministro de energía a este equipo antes de trabajar en su interior.

Notice of Inspection or Treatment

Pesticide Used

Room to Run Electric

