

PROPOSED

MAP LU-4

LEGEND

FUTURE LAND USE MAP

- RESORT FACILITIES MEDIUM
- RESIDENTIAL/OFFICE/RETAIL
- PRESERVATION
- RECREATION/OPEN SPACE
- INSTITUTIONAL
- TRANSPORTATION/UTILITY

COASTAL STORM AREA

- COASTAL STORM AREA LINE

FUTURE TRANSPORTATION

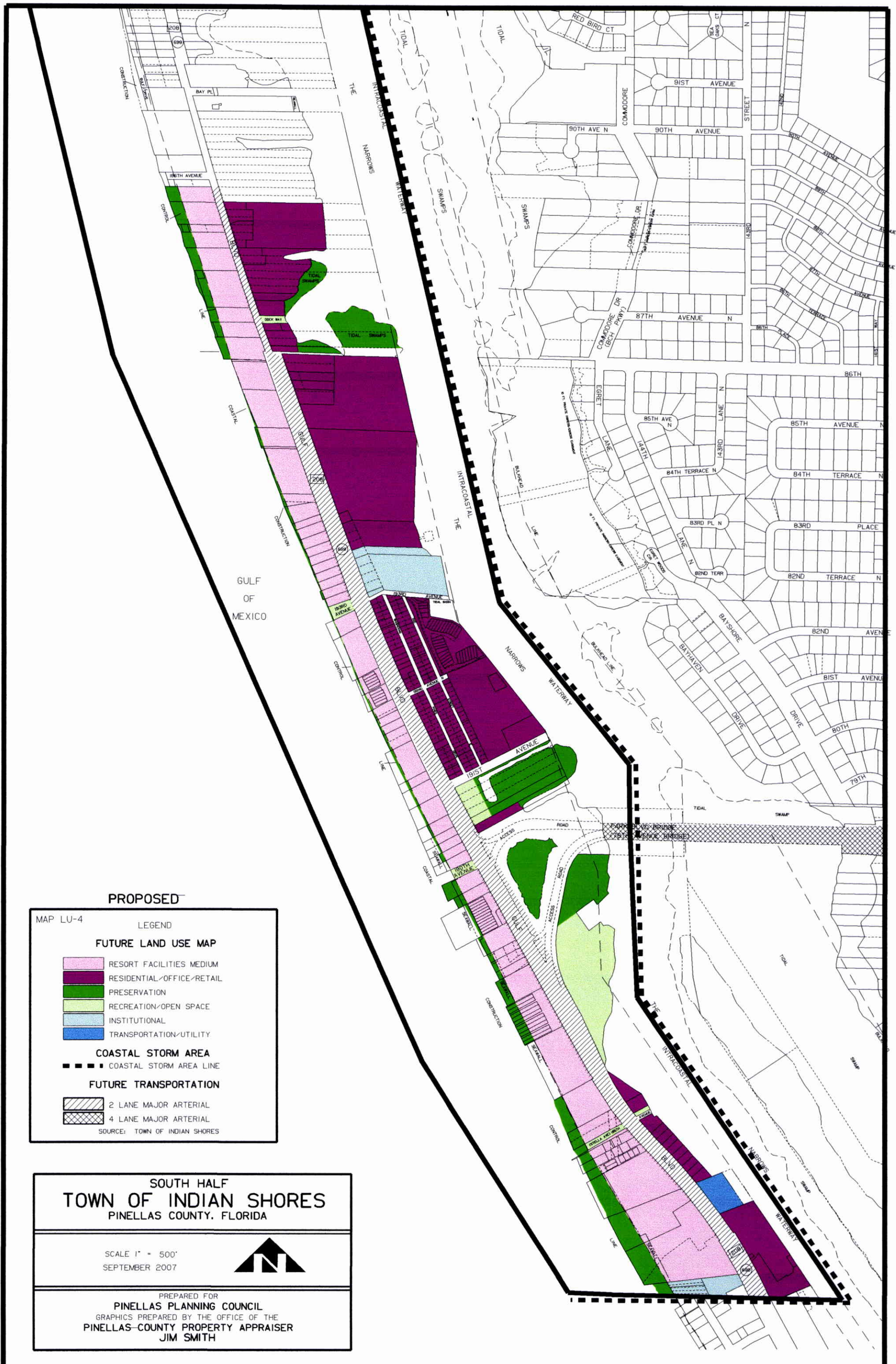
- 2 LANE MAJOR ARTERIAL
- 4 LANE MAJOR ARTERIAL

SOURCE: TOWN OF INDIAN SHORES

**NORTH HALF
TOWN OF INDIAN SHORES
PINELLAS COUNTY, FLORIDA**

SCALE 1" = 500'
SEPTEMBER 2007

PREPARED FOR
PINELLAS PLANNING COUNCIL
GRAPHICS PREPARED BY THE OFFICE OF THE
**PINELLAS COUNTY PROPERTY APPRAISER
JIM SMITH**



PROPOSED

MAP LU-4

LEGEND

FUTURE LAND USE MAP

- RESORT FACILITIES MEDIUM
- RESIDENTIAL/OFFICE/RETAIL
- PRESERVATION
- RECREATION/OPEN SPACE
- INSTITUTIONAL
- TRANSPORTATION/UTILITY

COASTAL STORM AREA

- COASTAL STORM AREA LINE

FUTURE TRANSPORTATION

- 2 LANE MAJOR ARTERIAL
- 4 LANE MAJOR ARTERIAL

SOURCE: TOWN OF INDIAN SHORES

**SOUTH HALF
TOWN OF INDIAN SHORES**
PINELLAS COUNTY, FLORIDA

SCALE 1" = 500'
SEPTEMBER 2007

PREPARED FOR
PINELLAS PLANNING COUNCIL
GRAPHICS PREPARED BY THE OFFICE OF THE
PINELLAS COUNTY PROPERTY APPRAISER
JIM SMITH